

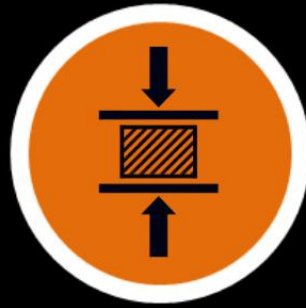


A BRAND IS A VOICE &  
A PRODUCT IS A SOUVENIR.

PU/PIR  
EXTERNAL >  
WALL/ROOF  
< INTERNAL  
WALL/CEILING



FIRE PROOF



COMPRESSION STRENGTH



SOUND PROOF



THERMAL INSULATION



**HOSUR PLANT**

## MANUFACTURING UNITS

### KARNATAKA

PU/PIR SANDWICH PANEL  
ROCKWOOL FIRE PROOF  
PANEL  
CLEAN/COLD ROOM PANELS  
STEEL FABRICATED DOORS

### TAMIL NADU

PRE ENGINEERED BUILDING  
PU/PIR SANDWICH PANEL  
PURLINS/DECKING  
ROOFING  
STANDING SEAM SHEETS

### GUJARAT

PU/PIR SANDWICH PANEL  
DECKING  
ROOFING/PURLINS

## THE COMPANY

We, at Alfa PEB family, would be extremely pleased to serve you as a potential buyer of our products. With a legacy of more than two decades, Alfa has continuously evolved and proved to be India's leading manufacturer of Pre Engineered Building, Multi-story Building & Sandwich Puf Panel.

# FULLY AUTOMATED CONTINUOUS MANUFACTURING :

- 1.Unwinding of coils
- 2.Corono system for surface cleansing
- 3.Heating of surface for better adhesion
- 4.Automated uniform laying of PU/PIR foam
- 5.Feeding in to oven /tunnel
- 6.Cutting into sizes
- 7.Packaging



THERMAL  
INSULATION



COMPRESSION  
STRENGTH



SOUND PROOF



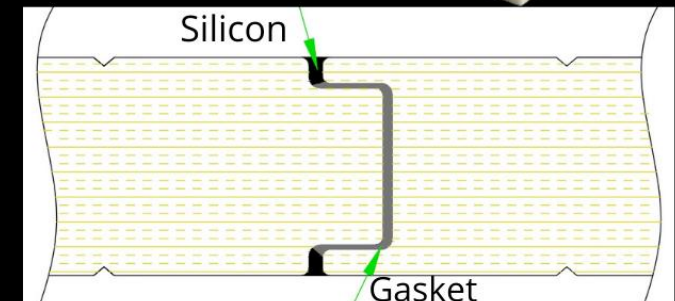
FIRE PROOF

# PU/PIR PANEL

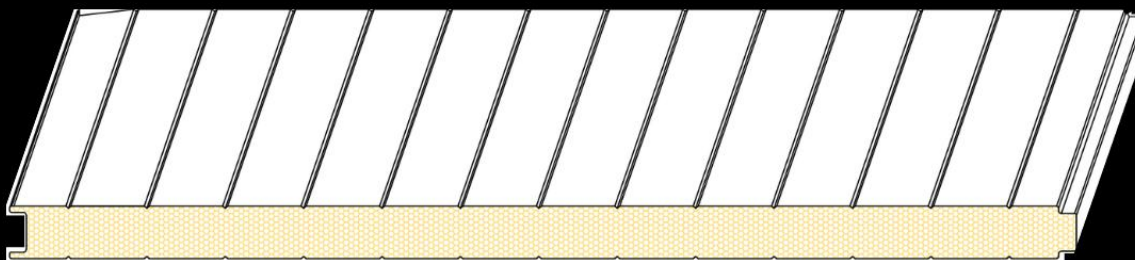
1. The modern, composite - based building construction material, composed of insulated core and two metal facings.
2. The wide range of applications as roofs, walls and extended ceiling panels, partition walls in an easy-building technology.
3. There is a special range of flashings and other accessories, which cover opened cores and improve the final look of the building.
4. Panels are available in different colors,sizes & thickness's

# WALL PANELS PARTITIONS FOR INDUSTRIAL / COMMERCIAL APPLICATION

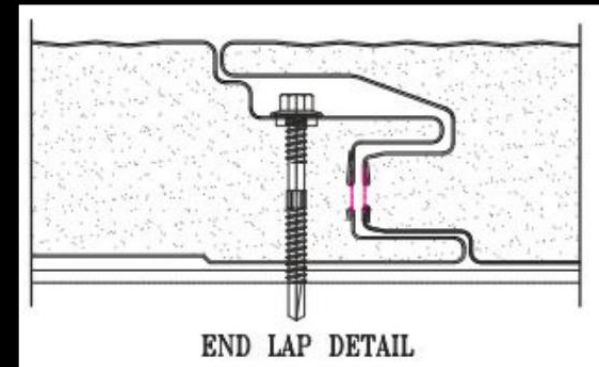
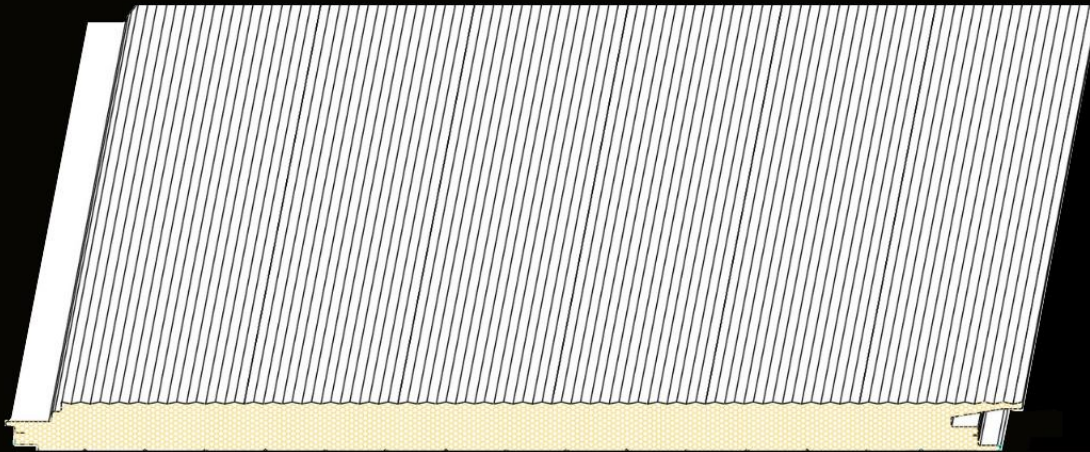
The "All in One" In Plant partition Wall System. Alfa modular wall systems are ideal for creating in-plant demising walls partitions quickly and cost effectively due to the minimal waste and shorter installation time frame compared to traditional construction materials. Plus, their modular design allows these wall systems to be moved or re-located - a perfect solution that adapts with changing business needs. Reach heights from floor to ceiling to completely enclose an area to create temperature and humidity controlled enclosures



## SINGLE TONGUE AND GROOVE



# ALFA PU/PIR WALL PANELS [ CONCEALED FASTENING SYSTEM ]



## FEATURES

Sandwich PUF panel with a concealed-fixing method for high quality industrial and commercial buildings,

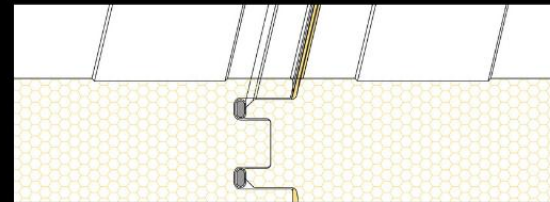
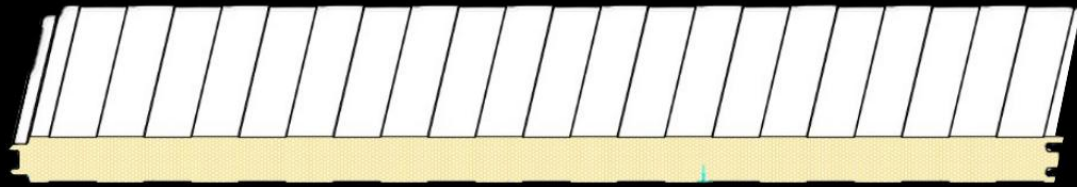
where good aesthetics are paramount. The panel external micro-V increases the aesthetic appeal of this panel, which can be orientated both vertically and horizontally as required.

SUPERIOR  
AESTHETIC APPEARANCE  
—  
FORM A SMOOTH FACADE  
WITH NO VISIBLE JOINTS

—  
MAINTAINS GOOD  
INSULATION PROPERTIES  
—  
CAN BE TIED VERTICALLY  
& HORIZONTALY

# COLD ROOM PANELS

## DOUBLE TONGUE AND GROOVE

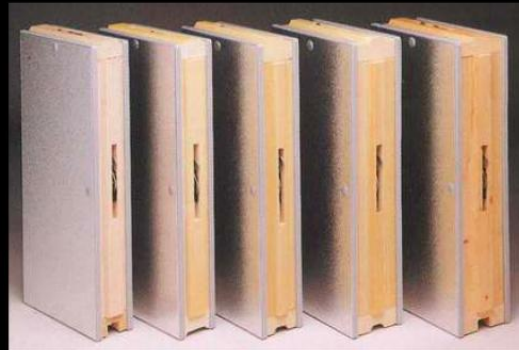


TABULAR RUBBER SEALING



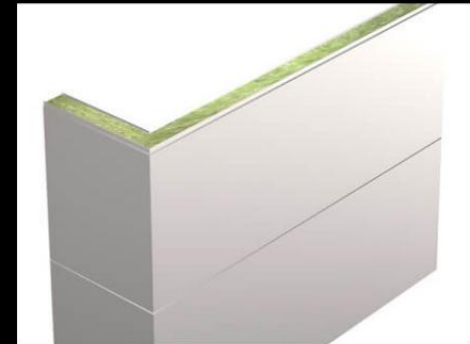
### PUF SLABS

PUF slabs are the thermal insulation Foam Materials for various applications in building and industries. It is also used as flooring in the cold storage.



### CAMLOCK PANEL

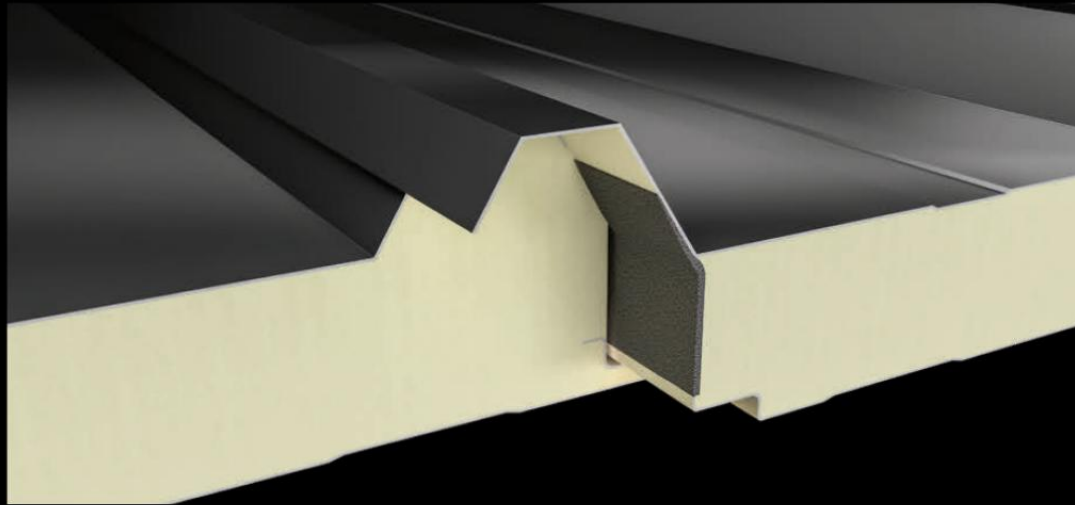
Specially designed lock mechanism ensures airtight between joints. Tongue and groove with cam locks provided.



### CORNER PANEL

Corner panel is nothing but corner connections with the corner panels are lockable.

# ALFA PU/PIR ROOF PANEL



ONE SIDE ALLUMINIUM FOIL FACED ROOF



## ADVANTAGES

TEMPERATURE  
CONTROL

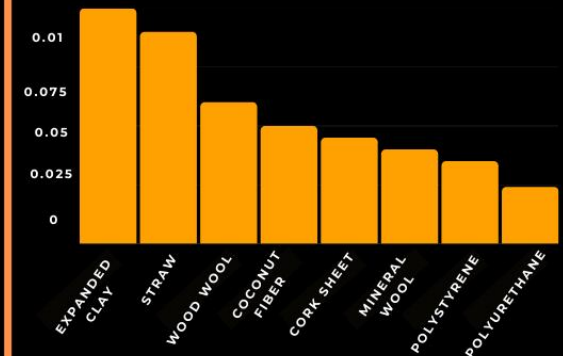
FACTORY MADE

FAST  
INSTALLATION

DURABILITY

LIGHTWEIGHT

## THERMAL CONDUCTIVITY



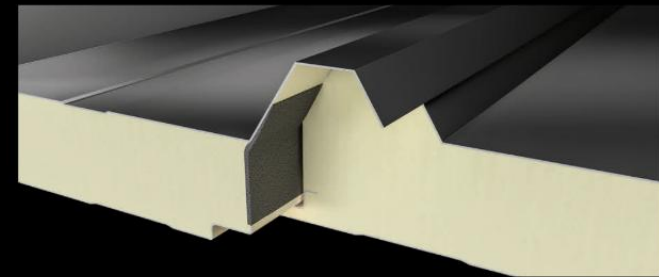
IN WATTS METER AND KELVIN(W/MK).THE BETTER THE INSULATION

# FIREPROOF PIR PANEL

## WHAT IS A PIR PANEL ?

PIR foam is referring to polyurethane foam processed at a high isocyanate index with a PIR catalyst producing a foam with considerable amounts of PIR structures.

PU PANEL	PIR PANEL
<ul style="list-style-type: none"><li>• FOAMING DENSITY 40 KG/M3</li><li>• MODERATE FIRE RESISTANCE</li><li>• LOWER ISO INDEX &gt;150</li><li>• HIGH SMOKE GENERATION</li><li>• THERMAL STABILTY &lt;80 DEGC</li></ul>	<ul style="list-style-type: none"><li>• FOAMING DENSITY GREATER THAN 40 KG/M3</li><li>• HIGH FIRE RESISTANCE</li><li>• HIGHER ISO INDEX &gt;180</li><li>• VERY LOW SMOKE GENERATION</li><li>• BETTER THERMAL STABILITY &lt;120 DEG C</li></ul>



## WHAT DOES A PIR PANEL ACHEIVE ?

High thermal stability of the PIR structure brings about better flame retardancy.

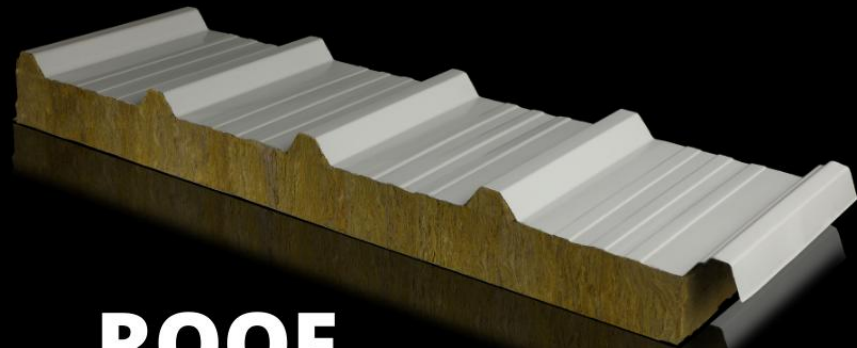
Due to heat influence carbonized PIR structure persists longer than the thermal barrier and thereby protects the underlying foams.



# FIREPROOF PANEL



**WALL**



**ROOF**

## ROCKWOOL PANEL

The Fireproof Rockwool Sandwich Panel/PIR is one of the most economical solutions to achieve maximum protection against fire with a very simple installation. It can resist in contact with the fire for 120 minutes without losing its structural properties.

This protection is achieved with a quick and easy installation that takes advantage of the tongue and groove of the Sandwich Panels to achieve total insulation.

## ADVANTAGES

**THERMAL  
PERFORMANCE**

**SOUND  
PROOF**

**ENVIRONMENT  
FREINDLY**

# ALFA PU- SANDWICH PANEL

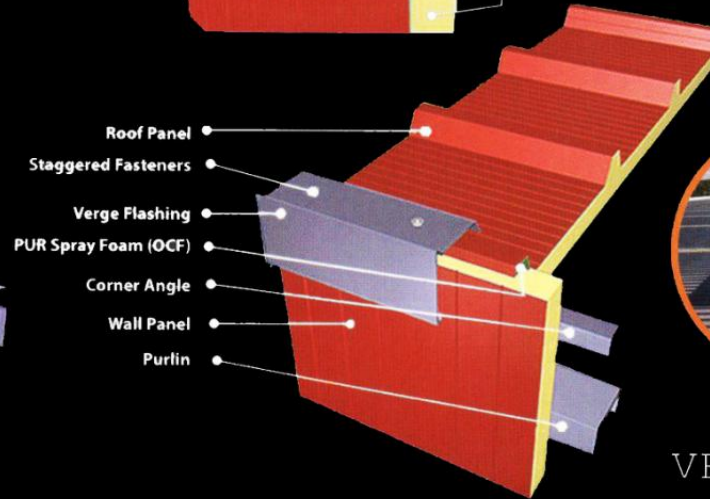
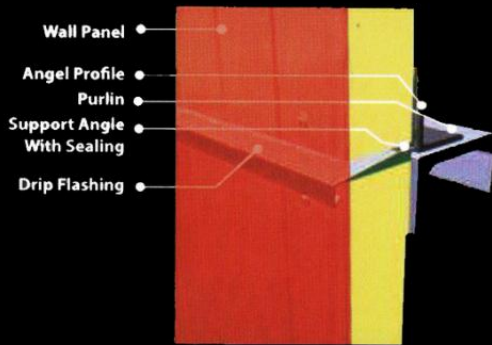
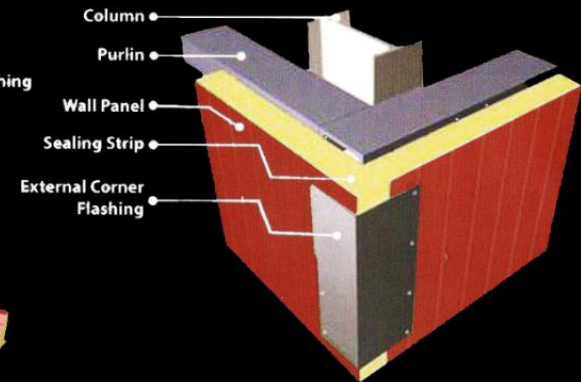
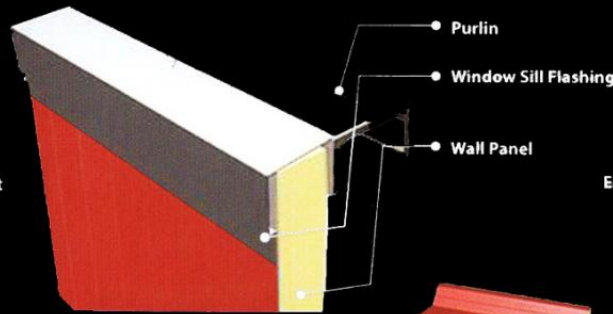
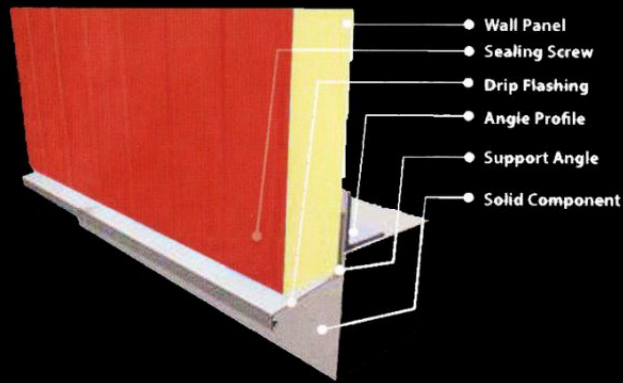
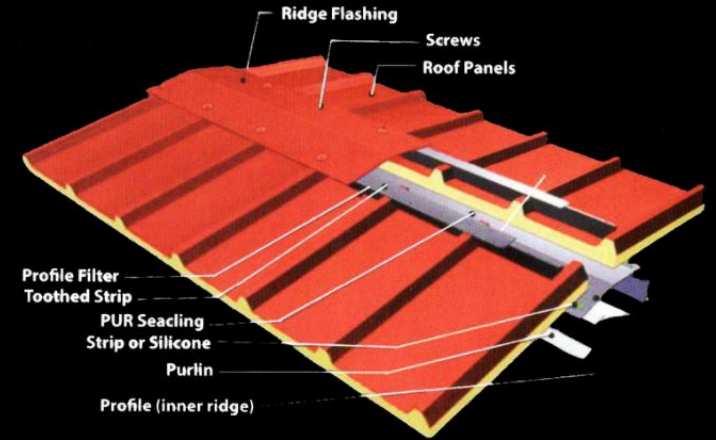
## GENERAL SPECIFICATION FOR PU- SANDWICH PANEL

SL. NO	CHARECTERISTICS	SPECIFICATION
01	FACIA OPTIONS	PCGI/PPGI/PPGL/ALU/SS
02	SUBSTRATE COATING MASS GMS/M2	120GSM , 70AZ, 150 AZ
03	YIELD STRENGTH -MPA MIN.	240/550 FOR GR80.
04	PAINTTYPE	RMP/SMP/PVDF(PVDF REQUIRES MOQ)
05	PAINT COATING THICKNESS(DFT)	RMP COATED-TOP COAT 18 TO 22 MICRONS,BACK COAT 5 TO 8 MICRONS
06	WIDTH - WALL	1.00MM / 1.15MM (STANDARD)
07	WIDTH - ROOF	1.06MM (STANDARD)
08	CORE THICKNESS (MM)	20 30 40 50 60 80 100 120 150
09	U VALUE (W/M2 K)	0.73 0.63 0.53 0.43 0.33 0.28 0.22 0.18 0.15
10	R VALUE (H-FT2 - *F / BTU)	- - 11 13 16 20 26 30 38
11	THERMAL CONDUCTIVITY AT 10 C MEAN TEMPERATURE (W/MOK)	0.023/0.024
12	BENDING STRENGTH (KG/CM2)	4
13	CLOSED CELL CONTENT (%)	92-95%
14	FIRE CLASS	FIRE RESISTANT

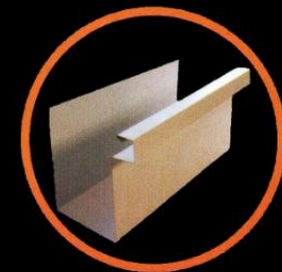
# PU/PIR FOAM CHARACTERISTICS

SL. NO	CHARECTERISTICS	UNIT	PIR	PU
01	TOTAL FOAM DENSITY	KG/ M3	40+2	48±2
02	CORE FOAM DENSITY	KG/ M3	44+2	36±2
03	COMPRESSIVE STRESS AT10% DEFORMATION	KPA	>0.21 N/MM2	≥100
04	TOUNG COMPRESSION MODULES	KPA	>2500	≥2500
05	FOAM TENSILE STRENGTH(ADHESION)	KPA	>100	≥100
06	TOUNG TENSILE MODULE	KPA	>2500	≥2500
07	SHEAR STRENGTH	KPA/ TD>	>90	≥90
08	THERMAL-CONDUCTIVITY-A@50C MEAN TEMP & B.@10C MEAN TEMP-MAX	KPA	A.0.03& B.0.023	A.0.03&B. 0.023
09	HORIZONTAL BURNING TEST	MM	<25	≤125
10	WATER VAPOUR TRANSMISSION-MAX	NG/ PASM	8.5	5.5
11	HOT DIMENSIONAL STABILITY AT 85+2C/100+2C FOR 24HRS-MAX	%	LENGTH+2 WIDTH+2 THICKNESS+2	LENGTH±2 WIDTH±2 THICKNESS±2
12	COLD DIMENSIONAL STABILITY AT -25+2C FOR 24HRS-MAX	%	LENGTH+2 WIDTH+2 THICKNESS+2	LENGTH±2 WIDTH±2 THICKNESS±2

# SANDWICH ROOF & WALL PANEL INSTALLATION SYSTEM



RIDGE VENTILATOR



GUTTER

# PRE ENGINEERED BUILDING



## OUR CLIENTELE

- METRO CASH & CARRY
- LLYODS PIPES
- IOCL
- MINDA GROUPS
- APL APPOLO TUBES
- BIG BASKET
- NEEL AUTO [JBM GROUP]
- FIEM INDUSTRIES [AUTOMOBILE]
- POWER GRID CORPORATION



### JODHANI PAPER LTD

**Application** :- Paper Plant

**Project Location** :- Tumkur ↓



### HIMAGIRI GROUP ↑

**Application** :- Commercial Complex

**Project Location** :- Bangalore



- TVS MOTORS
- ASHOK LEYLANDS
- HUTSUN AGRO
- DIXSON
- JSW
- WIPRO
- BRILA TYRES
- LULU SHOPING MALL
- SELLING & WILSON SOLAR
- PAGE INDUSTRIES - JOCKEY



### NEEL AUTO

# CLEAN ROOM



**HATSUN AGRO TECH**

## OUR CLIENTELE

1. *BIOCON*
2. *FOURRES INDIA LABS*
3. *HABITAT PHARMA*
4. *MADRAS PHARMACEUTICALS*
5. *BAPUJI SURGICALS*
6. *AYUSH PHARMA*
7. *HATSUN AGRO TECH*



**UNIBIC FOODS INDIA PVT LTD**

**Application** :- Food Processing

**Project Location** :- Bangalore



**DIXON TECHNOLOGIES**

**Application** :- Pharma

**Project Location** :- Tirupati



**BALAJI MEDITECH**

**Application** :- Pharma

**Project Location** :- salem

# COLD STORAGE

## OUR CLIENTELE



1. SRI GANAPATHI
2. SIDDHARTH IMPEX
3. SELVI COLD STORAGE
4. ISIRI COLD STORAGE
5. ULTRA LABORATORIES
6. NAMDHARI SEEDS



**SELVI COLD STORAGE**

**Application** :- Cold Storage

**Project Location** :- Tamil Nadu  
Salem



**SIDDARTH COLD STORAGE**

**Application** :- Cold Storage

**Project Location** :- Andhra Pradesh  
Tadipatri



**SRI GANAPATHI COLD STORAGE**

**Application** :- Cold Storage

**Project Location**:- Andhra Pradesh  
Guntur



# MANUFACTURING PLANTS

## HOSUR

Survey No162,163,164/2, & 167  
Kalukondapalli  
Village Thally Road,  
Hosur - 635114

## AHMEDABAD

Sy.No.192, Paikki Khata  
No.254& 212, Behind Intas Pharma,  
Near Matoda Patia, Changodar,  
Sarkhej-Bavla Highway,  
Ahmedabad-382 213.

## BANGALORE RETAIL

Door No. 45 & 45/1N.R. Road  
Bangalore- 560002  
Karnataka

## MARKETER & DISTRIBUTOR

## SALES BRANCHES

**CHENNAI**

**HYDERABAD**

**PUNE**

**KOCHI**

**VIJAYAWADA**

**NAGPUR**

 [www.alfapebltd.com](http://www.alfapebltd.com)

 **18005729242**